

LUHRING AUGUSTINE

531 West 24th Street

New York NY 10011

tel 212 206 9100 fax 212 206 9055

www.luhringaugustine.com

Yasumasa Morimura
Charles Atlas, *Anamneses*
Luhring Augustine Chelsea
January 30-March 21, 2026

Entrance:

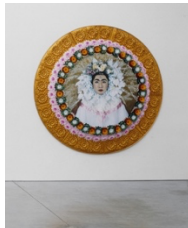


Yasumasa Morimura
Doublonnage (Marcel), 1988
Color photograph
59 x 47 1/4 inches
(149.9 x 120 cm)
Edition of 10 (#3/10)

Main Gallery (*clockwise, left to right*):



Yasumasa Morimura
Vermeer Study (A Great Story out of the Corner of a Small Room),
2004
Chromogenic print mounted on canvas
57 1/2 x 49 1/2 inches
(146.1 x 125.7 cm)
Edition of 5 and 2 AP (#4/5)



Yasumasa Morimura
An Inner Dialogue with Frida Kahlo (Flower Wreath and Tears),
2001
Chromogenic print mounted on canvas (tondo) with artist's frame
Diameter: 82 3/4 inches
(210.2 cm)
Edition of 3 (#3/3)



Yasumasa Morimura
An Inner Dialogue with Frida Kahlo (Four Parrots), 2001
Chromogenic print mounted on canvas
59 x 47 1/4 inches
(150 x 120 cm)
Edition of 5 (#2/5)

LUHRING AUGUSTINE

531 West 24th Street

New York NY 10011

tel 212 206 9100 fax 212 206 9055

www.luhringaugustine.com



Yasumasa Morimura

Une Moderne Olympia 2018, 2018

Chromogenic print, transparent medium

82 5/8 x 118 inches

(210 x 300 cm)

Framed: 88 1/2 x 124 inches (225 x 315 cm)

Edition of 5 and 2 AP (#2/5)



Yasumasa Morimura

Self-Portraits through Art History (Van Eyck in a Red Turban),

2016/2018

Chromogenic print, transparent medium

10 1/8 x 7 1/4 inches

(25.7 x 18.4 cm)

Edition of 10 and 2 AP (#3/10)



Yasumasa Morimura

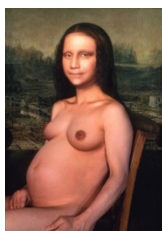
Daughter of Art History (Princess A), 1990

Ilfochrome print mounted on acrylic

82 3/4 x 63 inches

(210.2 x 160 cm)

Edition of 5 (#5/5)



Yasumasa Morimura

Mona Lisa in Its Pregnancy, 1998

Chromogenic print mounted on canvas

30 1/2 x 21 1/2 inches

(77.5 x 54.6 cm)

Edition of 10 (#7/10)



Yasumasa Morimura

Portrait (Fan), 1991

Chromogenic print mounted on canvas

55 1/8 x 47 1/4 inches (140 x 120 cm)

Framed: 65 x 57 1/8 inches (165.1 x 145.1 cm)

Edition of 5 and 2 AP (AP 2/2)

LUHRING AUGUSTINE

531 West 24th Street

New York NY 10011

tel 212 206 9100 fax 212 206 9055

www.luhringaugustine.com



Yasumasa Morimura

Dedicated to La Duquesa de Alba/ Black Alba, 2004

Chromogenic print mounted on canvas

70 7/8 x 47 1/4 inches

(180 x 120 cm)

Edition of 5 (#4/5)

Second Gallery:



Charles Atlas

Teach-X, 1998/2026

Single-channel video with sound

Duration: 2 minutes 39 seconds

Edition of 5 plus 2 artist's proofs



Charles Atlas

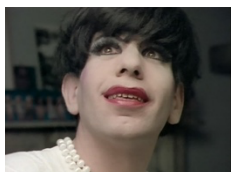
Mirror, 1991/2026

Single-channel video with sound

Duration: 4 minutes 9 seconds

Dimensions variable

Edition of 5 plus 2 artist's proofs

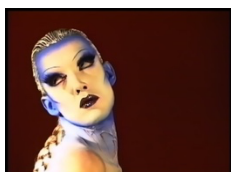


Charles Atlas

Hapi Phace, 1991/2026

Single-channel video with sound

Duration: 4 minutes 10 seconds



Charles Atlas

Kabuki Starshine (Rehearsal), 1998/2026

(in collaboration with Anohni)

Single-channel video with sound

Duration: 4 minutes 15 seconds



Charles Atlas

Stanley Love (Instant Fame), 2003/2026

Single-channel video with sound

Duration: 4 minutes 54 seconds

Edition of 1 plus 1 artist's proof

LUHRING AUGUSTINE

531 West 24th Street

New York NY 10011

tel 212 206 9100 fax 212 206 9055

www.luhringaugustine.com



Charles Atlas

Badomi de Cesare (Instant Fame), 2003/2026

Single-channel video with sound

Duration: 2 minutes 44 seconds



Charles Atlas

Self-Portrait, 1972

Single-channel video with sound

Duration: 3 minutes 32 seconds

Edition of 5 plus 2 artist's proofs



Charles Atlas

Life's A Beach, 2014/2019

Single-channel video with sound

Duration: 2 minutes, 45 seconds

Edition of 5 plus 2 artist's proofs