

LUHRING AUGUSTINE

531 West 24th Street
New York NY 10011
tel 212 206 9100 fax 212 206 9055
www.luhringaugustine.com

Sliced Tropics & Cosmic Dancers

Luhring Augustine Chelsea

September 10 – October 25, 2025

Entrance:



Elizabeth Murray

Like a Leaf, 1983

Oil on canvas (six parts)

98 x 90 x 9 in

(248.9 x 228.6 x 22.9 cm)

Main Gallery (clockwise, left to right):



Philip Taaffe

Glyphic Field, 2014

Mixed media on canvas

110 3/8 x 249 3/8 inches

(280.4 x 633.4 cm)



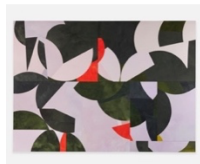
Mark Handforth

TURQUOISE STAR/COSMIC DANCER, 2014

Painted aluminum

111 x 123 x 48 inches

(281.9 x 312.4 x 121.9 cm)



Sarah Crowner

Sliced Tropics, 2018

Acrylic on canvas, sewn

194 x 268 inches

(492.8 x 680.7 cm)



Elizabeth Murray

Sentimental Education, 1982

Oil on canvas

127 x 96 inches

(322.6 x 243.8 cm)

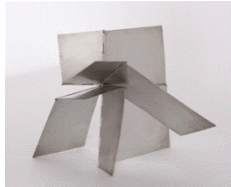
LUHRING AUGUSTINE

531 West 24th Street
New York NY 10011
tel 212 206 9100 fax 212 206 9055
www.luhringaugustine.com

Back Gallery (clockwise, left to right):



Richard Rezac
Constelatie, 2024
Cast bronze
16 1/2 x 17 1/2 x 2 inches
(41.9 x 44.5 x 5.1 cm)



Lygia Clark
"Bicho" Monumento para todas as situações, 1960
Aluminum
Dimensions variable
Approx. 9 7/8 x 9 7/8 x 9 7/8 inches
(25 x 25 x 25 cm)



Lygia Clark
Planos em superfície modulada, 1957
Collage, cardboard
5 5/8 x 21 1/4 inches
(14.4 x 54 cm)
Framed: 18 1/4 x 33 7/8 inches
(46.5 x 86.1 cm)



Richard Rezac
Untitled (23-08), 2023
Painted cherry wood and aluminum
15 x 18 x 3 3/4 inches
(38.1 x 45.7 x 9.5 cm)



Richard Rezac
Nemaha (pair), 2016
Painted cherry wood, cherry wood, aluminum
23 x 19 1/2 x 3 inches
(58.4 x 49.5 x 7.6 cm)