

# LUHRING AUGUSTINE TRIBECA

## Salman Toor

*Wish Maker*

Luhring Augustine Tribeca

May 2 – June 21, 2025

Main Gallery (clockwise from left):



### Salman Toor

*Ceremony, 2024*

Charcoal, ink, and gouache on paper

18 x 20 inches

(45.7 x 50.8 cm)

Framed: 20 7/8 x 23 inches

(53 x 58.3 cm)



### Salman Toor

*Three Kissers, 2024*

Charcoal, ink, and gouache on paper

9 x 12 inches

(22.9 x 30.5 cm)

Framed: 14 1/2 x 17 1/2 inches

(36.7 x 44.3 cm)



### Salman Toor

*The Devotees I, 2024*

Charcoal, ink, and gouache on paper

11 x 8 1/2 inches

(27.9 x 21.6 cm)

Framed: 16 1/2 x 14 inches

(41.8 x 35.4 cm)



### Salman Toor

*Three Mascots, 2023*

Charcoal and gouache on paper

12 x 9 inches

(30.5 x 22.9 cm)

Framed: 17 1/2 x 14 1/2 inches

(44.3 x 36.8 cm)

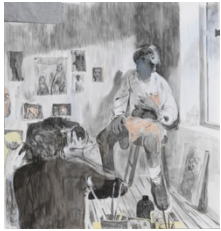
LUHRING  
AUGUSTINE  
TRIBECA



**Salman Toor**  
*Oh Father*, 2024  
Charcoal and gouache on paper  
9 x 10 3/8 inches  
(22.9 x 26.4 cm)  
Framed: 14 1/2 x 15 7/8 inches  
(36.8 x 40.3 cm)



**Salman Toor**  
*The Leader*, 2024  
Charcoal, ink, and gouache on paper  
12 x 17 7/8 inches  
(30.5 x 45.4 cm)  
Framed: 17 1/2 x 23 1/2 inches  
(44.3 x 59.5 cm)



**Salman Toor**  
*The Artist I*, 2024  
Charcoal, ink, and gouache on paper  
20 x 19 1/8 inches  
(50.8 x 48.6 cm)  
Framed: 23 x 22 1/8 inches  
(58.4 x 56.2 cm)



**Salman Toor**  
*Among the Believers*, 2024  
Charcoal, ink, and gouache on paper  
17 7/8 x 29 7/8 inches  
(45.4 x 75.9 cm)  
Framed: 20 7/8 x 32 7/8 inches  
(53 x 83.5 cm)



**Salman Toor**  
*Foliage*, 2024  
Pencil, charcoal, and gouache on paper  
9 x 12 inches  
(22.9 x 30.5 cm)  
Framed: 14 1/2 x 17 1/2 inches  
(36.8 x 44.5 cm)

LUHRING  
AUGUSTINE  
TRIBECA



**Salman Toor**  
*The Crush*, 2024  
Charcoal, ink, and gouache on paper  
12 x 14 1/4 inches  
(30.5 x 36.2 cm)  
Framed: 17 1/2 x 19 7/8 inches  
(44.5 x 50.3 cm)



**Salman Toor**  
*Looking Back*, 2024  
Charcoal, ink, and gouache on paper  
17 7/8 x 24 inches  
(45.4 x 61 cm)  
Framed: 21 x 27 inches  
(53.2 x 68.4 cm)



**Salman Toor**  
*Rescuers*, 2024  
Gouache and watercolor on paper  
7 3/4 x 10 5/8 inches  
(19.7 x 26.8 cm)  
Framed: 13 1/4 x 16 1/8 inches  
(33.7 x 40.8 cm)



**Salman Toor**  
*Turtleneck*, 2024  
Charcoal, ink, and gouache on paper  
14 1/2 x 12 inches  
(36.8 x 30.5 cm)  
Framed: 20 x 17 1/2 inches  
(50.8 x 44.5 cm)



**Salman Toor**  
*Fag Puddle with Hat*, 2024  
Charcoal, ink, and gouache on paper  
17 7/8 x 24 inches  
(45.4 x 61 cm)  
Framed: 21 x 27 inches  
(53.2 x 68.4 cm)

LUHRING  
AUGUSTINE  
TRIBECA



**Salman Toor**  
*Changing*, 2024  
Charcoal, ink, and gouache on paper  
17 3/4 x 12 inches  
(45.1 x 30.5 cm)  
Framed: 23 1/4 x 17 1/8 inches  
(59.1 x 43.4 cm)



**Salman Toor**  
*Walk in the Woods*, 2020  
Charcoal, ink, and gouache on paper  
17 7/8 x 47 3/4 inches  
(45.4 x 121.3 cm)  
Framed: 20 7/8 x 50 7/8 inches  
(53 x 129.1 cm)



**Salman Toor**  
*Dead Dad Puddle*, 2024  
Charcoal, ink, and gouache on paper  
12 x 9 inches  
(30.5 x 22.9 cm)  
Framed: 17 1/2 x 14 1/2 inches  
(44.3 x 36.8 cm)



**Salman Toor**  
*Nightstand II*, 2024  
Charcoal, ink, and gouache on paper  
16 1/8 x 12 1/8 inches  
(40.8 x 30.8 cm)  
Framed: 21 5/8 x 17 5/8 inches  
(54.8 x 44.8 cm)



**Salman Toor**  
*Fog Puddle with Arch and Debris*, 2024  
Charcoal, ink, and gouache on paper  
22 1/4 x 29 7/8 inches  
(56.5 x 75.9 cm)  
Framed: 25 1/4 x 32 7/8 inches  
(64.1 x 83.5 cm)

LUHRING  
AUGUSTINE  
TRIBECA



**Salman Toor**

*Moonwalk*, 2024

Pencil, charcoal, and gouache on paper

9 x 12 inches

(22.9 x 30.5 cm)

Framed: 14 1/2 x 17 1/2 inches

(36.8 x 44.5 cm)

Top row (from left):



**Salman Toor**

*The Scroller*, 2024

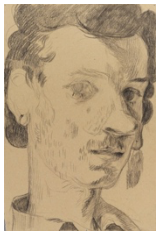
Charcoal, pencil, and ink on paper

9 x 12 inches

(22.9 x 30.3 cm)

Framed: 14 1/2 x 17 1/2 inches

(36.8 x 44.3 cm)



**Salman Toor**

*Boy*, 2024

Charcoal on paper

8 1/4 x 5 1/2 inches

(21 x 14 cm)

Framed: 13 3/4 x 11 inches

(34.9 x 27.9 cm)



**Salman Toor**

*Heels*, 2024

Charcoal and gouache on paper

14 1/8 x 12 inches

(35.9 x 30.3 cm)

Framed: 19 5/8 x 17 1/2 inches

(49.8 x 44.3 cm)



**Salman Toor**

*Two Figures II*, 2024

Charcoal and gouache on paper

12 x 17 7/8 inches

(30.5 x 45.4 cm)

Framed: 17 1/2 x 23 3/8 inches

(44.5 x 59.4 cm)

LUHRING  
AUGUSTINE  
TRIBECA

Middle row (from left):



**Salman Toor**  
*Poor Ass*, 2024  
Charcoal and ink on paper  
8 1/4 x 5 1/2 inches  
(21 x 14 cm)  
Framed: 13 3/4 x 11 inches  
(34.9 x 27.9 cm)



**Salman Toor**  
*Daddy*, 2024  
Charcoal, pencil, ink, and gouache on paper  
11 x 8 1/2 inches  
(27.9 x 21.6 cm)  
Framed: 16 1/2 x 14 inches  
(41.8 x 35.4 cm)



**Salman Toor**  
*Solemn Couple*, 2024  
Charcoal, ink, and gouache on paper  
10 1/4 x 7 1/8 inches  
(26 x 18.1 cm)  
Framed: 15 3/4 x 12 5/8 inches  
(40 x 31.9 cm)



**Salman Toor**  
*Two Figures*, 2024  
Charcoal, ink, and gouache on paper  
12 x 17 7/8 inches  
(30.5 x 45.4 cm)  
Framed: 17 1/2 x 23 1/2 inches  
(44.3 x 59.5 cm)



**Salman Toor**  
*Ash Blonde*, 2024  
Charcoal, ink, and gouache on paper  
11 x 8 1/2 inches  
(27.9 x 21.6 cm)  
Framed: 16 1/2 x 14 inches  
(41.8 x 35.4 cm)

LUHRING  
AUGUSTINE  
TRIBECA



**Salman Toor**  
*Angry Dads*, 2024  
Charcoal, ink, and gouache on paper  
12 x 9 inches  
(30.5 x 22.9 cm)  
Framed: 17 1/2 x 14 1/2 inches  
(44.3 x 36.8 cm)

Bottom row (from left):



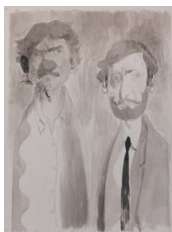
**Salman Toor**  
*Typing Boy*, 2024  
Charcoal, ink, and gouache on paper  
11 5/8 x 8 1/8 inches  
(29.5 x 20.6 cm)  
Framed: 17 1/8 x 13 5/8 inches  
(43.5 x 34.6 cm)



**Salman Toor**  
*Towelhead*, 2024  
Charcoal, ink, and gouache on paper  
10 7/8 x 8 5/8 inches  
(27.6 x 21.9 cm)  
Framed: 16 3/8 x 14 1/8 inches  
(41.6 x 35.9 cm)



**Salman Toor**  
*Ass*, 2024  
Charcoal, ink, and gouache on paper  
8 1/4 x 5 1/2 inches  
(21 x 14 cm)  
Framed: 13 3/4 x 11 inches  
(34.9 x 27.9 cm)



**Salman Toor**  
*Two Uncles*, 2024  
Charcoal and ink on paper  
12 x 9 inches  
(30.5 x 22.9 cm)  
Framed: 17 1/2 x 14 1/2 inches  
(44.3 x 36.8 cm)



LUHRING  
AUGUSTINE  
TRIBECA



**Salman Toor**

*Boy, Dads*, 2024

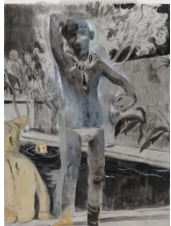
Pencil, charcoal, and gouache on paper

10 1/8 x 10 1/2 inches

(25.7 x 26.7 cm)

Framed: 15 5/8 x 16 1/4 inches

(39.7 x 41.3 cm)



**Salman Toor**

*Speedo*, 2024

Charcoal, ink, and gouache on paper

24 3/8 x 17 7/8 inches

(61.9 x 45.4 cm)

Framed: 27 3/8 x 20 7/8 inches

(69.4 x 53 cm)



**Salman Toor**

*Fag Puddle with Heads*, 2024

Charcoal, ink, and gouache on paper

12 x 17 7/8 inches

(30.5 x 45.4 cm)

Framed: 17 1/2 x 23 1/2 inches

(44.3 x 59.5 cm)



**Salman Toor**

*Fag Puddle with Books and Wire*, 2024

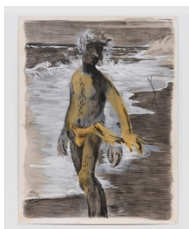
Charcoal, ink, and gouache on paper

23 7/8 x 17 7/8 inches

(60.6 x 45.4 cm)

Framed: 26 7/8 x 20 7/8 inches

(68.3 x 53 cm)



**Salman Toor**

*Beach*, 2023

Charcoal, ink, and gouache on paper

16 7/8 x 13 inches

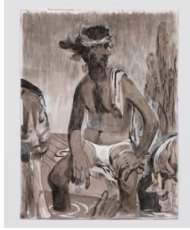
(42.9 x 33 cm)

Framed: 22 3/8 x 18 1/2 inches

(56.8 x 47 cm)



# LUHRING AUGUSTINE TRIBECA



**Salman Toor**  
*Poolside*, 2024  
Charcoal, ink, and gouache on paper  
16 x 12 1/8 inches  
(40.6 x 30.8 cm)  
Framed: 21 1/2 x 17 5/8 inches  
(54.6 x 44.8 cm)



**Salman Toor**  
*Boys, Changing*, 2024  
Charcoal, ink, and gouache on paper  
16 x 11 3/4 inches  
(40.6 x 29.8 cm)  
Framed: 21 1/4 x 17 1/4 inches  
(54 x 43.8 cm)

Viewing room (from left):



**Salman Toor**  
*The Cuddlers*, 2025  
Intaglio on Arches En Tout Cas paper  
18 5/8 x 20 inches (47.3 x 50.8 cm)  
Framed: 21 1/2 x 23 inches (54.6 x 58.4 cm)  
Limited Edition



**Salman Toor**  
*The Barter*, 2025  
Intaglio on Arches En Tout Cas paper  
31 3/8 x 25 inches (79.7 x 63.5 cm)  
Framed: 34 3/8 x 28 1/8 inches (87.2 x 71.3 cm)  
Limited Edition



**Salman Toor**  
*Hilltop Gurl*, 2025  
Intaglio on Arches En Tout Cas paper  
20 1/2 x 18 1/8 inches (52.1 x 46 cm)  
Framed: 23 3/8 x 18 inches (59.4 x 45.7 cm)  
Limited Edition