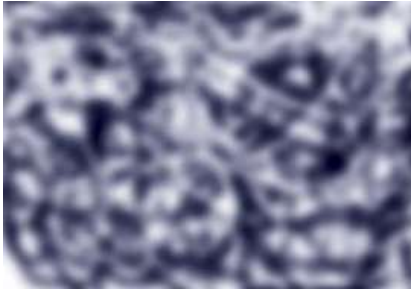


# LUHRING AUGUSTINE

531 West 24th Street  
New York NY 10011  
tel 212 206 9100 fax 212 206 9055  
www.luhringaugustine.com



## ***Prints and Editions***

January 25 – February 23, 2019

Opening reception: Thursday, January 24, 6-8pm

Luhring Augustine is pleased to present *Prints and Editions*, an exhibition centered around printmaking as explored by gallery artists, including Jeff Elrod, Tom Friedman, Sanya Kantarovsky, Glenn Ligon, Yasumasa Morimura, Jeremy Moon, Reinhard Mucha, Philip Taaffe, Tunga, Rachel Whiteread, Christopher Wool, and Zarina.

For these artists, printmaking has provided fruitful grounds for experimentation in their varied practices. Their works collectively demonstrate the medium's versatility through its many forms, ranging from intaglio to photogravure to silkscreen and monotype. While many feature printmaking prominently within their creative process, others engage with it more peripherally as a means of expanding their practice.

**Zarina** identifies herself as a printmaker as well as a sculptor in that she carves and etches the surfaces of her materials, which transfers her abstract and geometric compositions. The subtractive elements of relief and intaglio are placed in dialogue with the additive qualities of collage, as is also evident within **Philip Taaffe's** intricately layered compositions. Taaffe builds his surfaces by silk-screening stenciled imagery borrowed from nature, architecture, and archeological fragments, varying the same core motifs in order to produce distinctive results. **Glenn Ligon** employs repetition in a slightly different manner in his text-based work as a means of abstracting language. He overlays text in multiple layers onto the same surface, thereby rendering the words largely illegible. **Jeff Elrod** and **Christopher Wool** both combine digital and analog processes in their respective practices. Elrod's 'frictionless' drawings, created with a computer mouse, reimagine painterly gesture on a platform where elements like scale, resolution, and saturation are more swiftly negotiated. Wool often mines his earlier works as sources for new ones, transforming them through photographic reproduction, as well as through markings and erasures, blurring the distinction between the handmade and mechanical. **Sanya Kantarovsky's** monotypes depicting stylized figures similarly minimize the distance between copy and original, revealing in their expressive qualities the dynamic relationship between template, substrate, and the artist's hand.

For further information about the artists, please contact Rana Saner at 212.206.9100 or via email at [rana@luhringaugustine.com](mailto:rana@luhringaugustine.com). For press requests, please contact Caroline Burghardt at 718.386.2745 or via email at [caroline@luhringaugustine.com](mailto:caroline@luhringaugustine.com).